

Optional probes for MarSurf M 300

Probes for various measuring tasks for use with RD 18

The P-probes are characterized by special construction features:

- Stylus tip geometry as per EN ISO 3274, standard 2 μm/90°
- Measuring force of approx. 0.7 mN (as per EN ISO 3274)
- Reliable inductive converter
- Robust, rigid housing
- Self-aligning, elastic bearings
- Reliable plug and socket connections

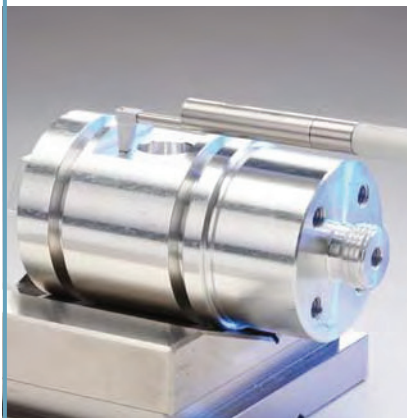
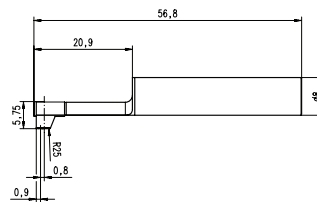


PHT 6-350 pick-up

Type
Skid radius
Contact point
Measuring range
Specification

Order No. 6111520 (standard probe)

single-skid pick-up with spherical skid
25 mm (.984 in) in traversing direction,
2.9 mm (.114 in) at right angles
0.8 mm (.0315 in) in front of the stylus
350 μm (0.014 in)
for plane surfaces, bores with a dia. larger than 6 mm,
(.236 in) and a max. depth of 17 mm (.669 in), grooves with
a width larger than 3 mm (.118 in);
min. workpiece length = traversing length + 1 mm (.0394 in)

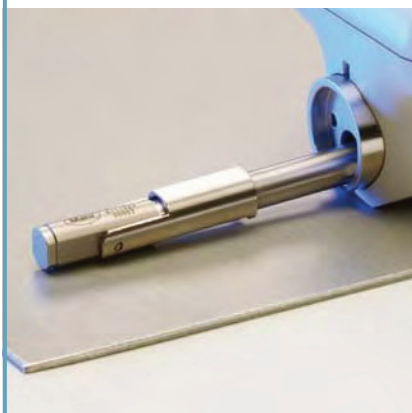
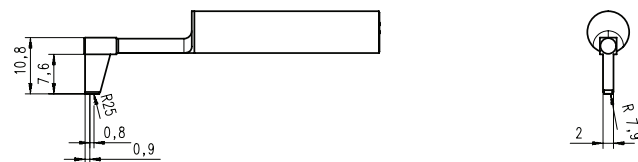


PHT 11-100 pick-up

System
Type
Skid radius
Contact point
Measuring range
Specification

Order No. 6111524

NHT 6-150 pick-up Order No. 6111504
single-skid pick-up with spherical skid
25 mm (.984 in) in traversing direction,
2.9 mm (.114 in) at right angles
0.8 mm (.0315 in) in front of the stylus
150 μm (.00591 in)
for plane surfaces, bores with a dia. larger than
11 mm (.433 in) and a max. depth of 14 mm (.551 in),
grooves with a width larger than 2.5 mm (.098 in)



PT 150 pick-up

Type
Skid radius
Contact point
Measuring range
Specification

Order No. 6111523

dual-skid pick-up with spherical skid
50 mm (1.969 in) in traversing direction,
3 mm (.118 in) at right angles
4.5 mm (.177 in) in front of the stylus
150 μm (.006 in)
Dual-skid pick-up for measurements on metal sheets and
roller surfaces according to DIN EN 10049 (SEP).
min. workpiece length = tracing length + 5 mm (.197 in)

